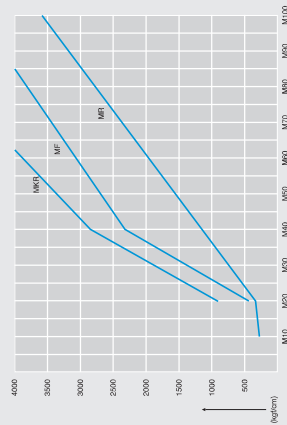


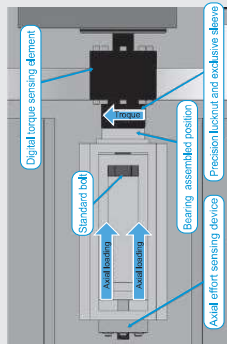
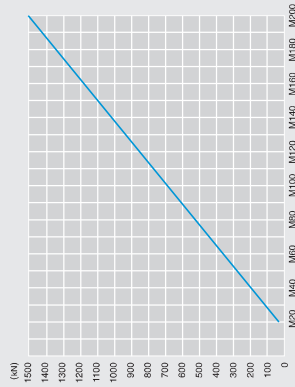
Technical  
Information  
**Lock Nuts**

### Loosen Torque of Angle Displacement

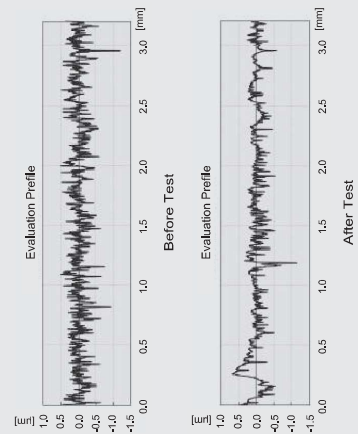
Remarks :  
 (a) The data are for reference only  
 (b)  $1Nm=10.2kg\cdot cm=0.73lb\cdot ft$



### Axial Loading

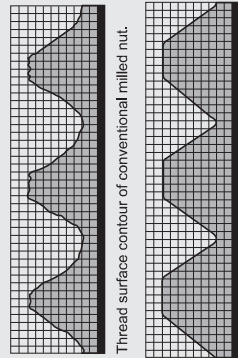


### Surface Roughness



### Surface Profile

Specify that the turned thread will present coarser surface, which will lead to the reduced pre-stress after collapsing as to cause the loosening of nut in a more serious situation.

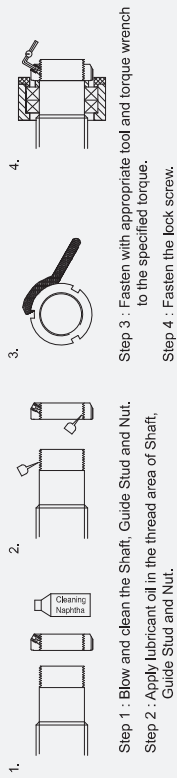


Thread surface contour of conventional milled nut.

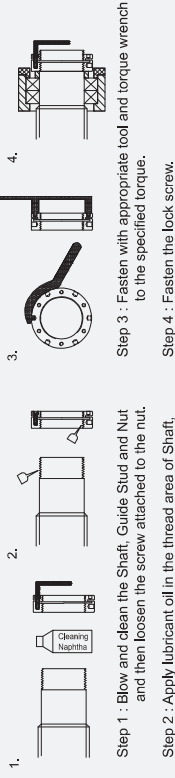
The thread surface contour after grinding the G MF, GMR series precision nuts.

### Nut Assembled Procedure

Example : GMF, GMR Series

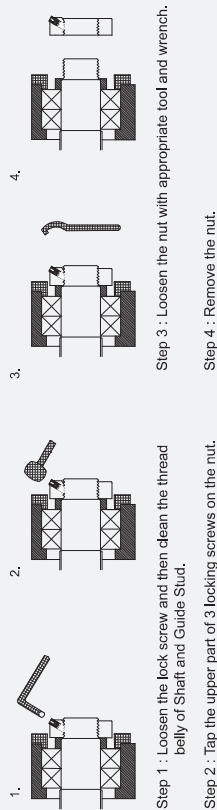


Example : GMKR Series



### Nut Released Procedure

Example : GMF, GMR Series



Example : GMKR Series

