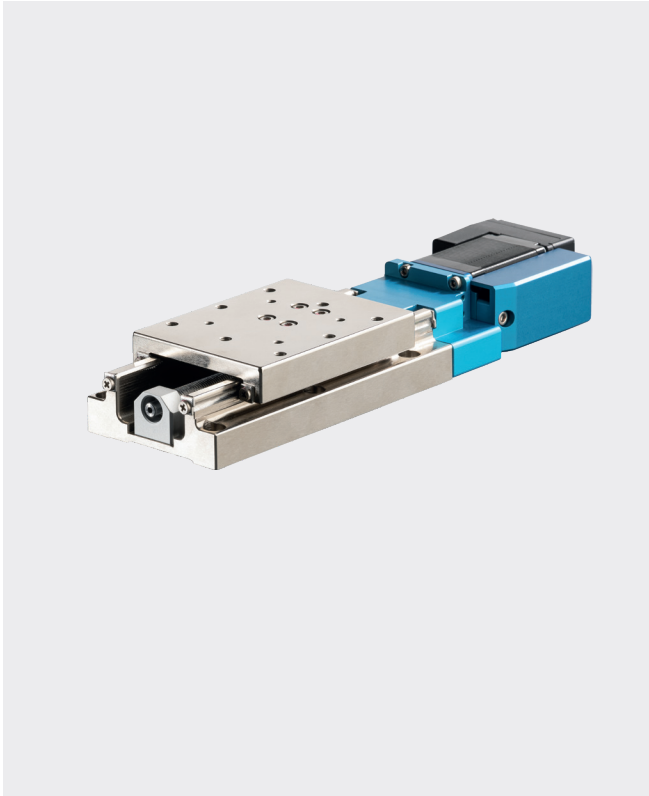


CXS - MOTORIZED POSITIONER

with included closed loop Controller available



Technical Specification	
Table Size	50x50 60x60 80x80
Table Stroke	20, 30, 50 mm (50mm only with size 60 and 80)
Pitch	1mm, Preloaded Ball Screw
Repeatability /Accuracy	+/- 500nm
Max Speed	20 mm/s (up to 50mm with EZI Servo)
Minimum Step	<1µm
Straightness	2µm
Parallelism	10µm
Material	Stainless Steel (Body and rail = one piece)
Motor	Nanotec / Fastech 2 Phase Stepper Motor
Connector	Harting ix Industrial®
Limit switch	Photoelectric
Power Voltage	24V DC
Compatibility	any 2 phase Stepper Motor Controller
Controller	available with integrated Closed Loop controller