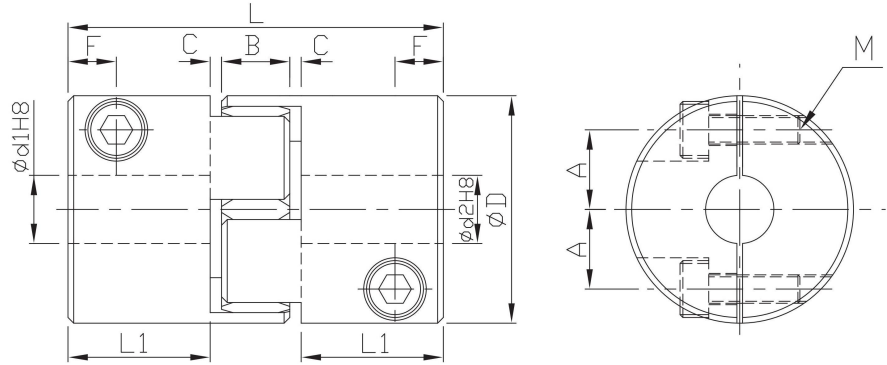


FACE



- Operating temperature : -20°C~90°C
- Offset of angular, parallel, or axial deviation are individual allowed value, so couple reasons of axial offset appearing at same time would reduce the unit allowable value.
- Key way available on request per indicated as LK(∅d1 bore), RK(∅d2 bore), WK(∅d1.∅d2 bore)



FACE D=55,65,80

Component	Material	Surface finished	Accessories
Main frame	AL6061T651	Anodized	Clamping
Spider	Urethane(PU)	—	

Key way ∅d1 . ∅d2	W		H		Key way dimension W□
	Dimension	Alloable tolerance	Dimension	Alloable tolerance	
6~7	2	±0.015	1.0	±0.1	2*2
8~10	3		1.4		3*3
11~12	4		1.8		4*4
13~16	5	±0.02	2.3		5*5
18~22	6		2.8		6*6
24~30	8	±0.025	3.3		8*8
32~42	10				10*10

Size		Spider Elastic strength (Color)	∅d1&∅d2 options * ∅d1 ≤ ∅d2						L	L1	B	C	F	A	Clamping screw	
Model	∅D		16	20	24	32	35	40							42	M
FACE	55	92sh A(W) 98sh A(R)	●	●	●				78	30	14	2	10.5	20	M6	10.5
	65		●	●	●	●	●		90	35	15	2.5	11.5	25	M8	25
	80		●	●	●	●	●	●	●	114	45	18	3	15.5	25	M8

★Moment of inertial torque and weight calculated by maximum diameter.

Specifications		Allowable Torque (N.m)		Allowable Angle Mis-alignment	Allowable Parallel Mis-alignment (mm)		Allowable Axile Mis-alignment (mm)	Static torsional stiffness (N.m/rad)		Max. RPM (r/min ⁻¹)	Moment of inertia (kg.m)	Weight (g)
Model	∅D	R	W		R	W		R	W			
FACE	55	60	35	0.9°	0.1	0.1	1.2	2600	1600	8650	1.6*10 ⁻⁴	330
	65	160	95					4900	3000	7350	3.8*10 ⁻⁴	560
	80	325	190					6500	5300	5950	1.0*10 ⁻³	560

Ordering Example: FACE65 - 24 - 55 - 100 PCS
Model no. ∅d1 ∅d2 Q'ty