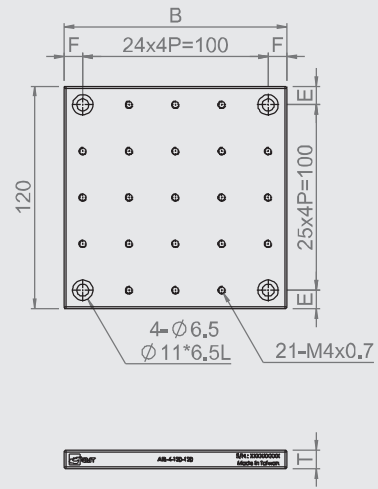
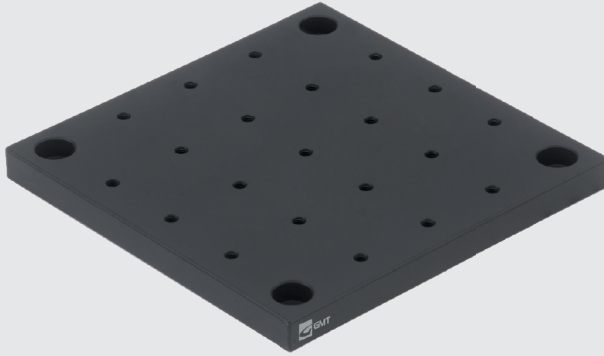


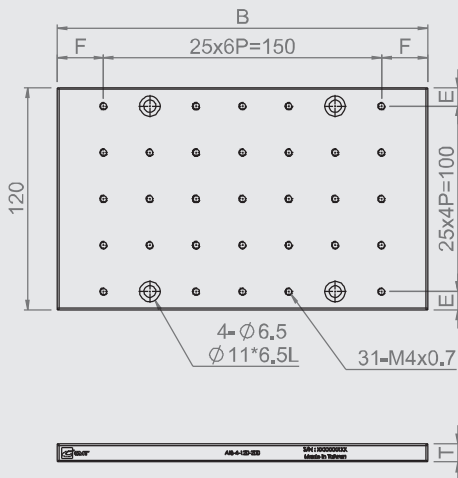
Adaptor plate

Adaptor plate

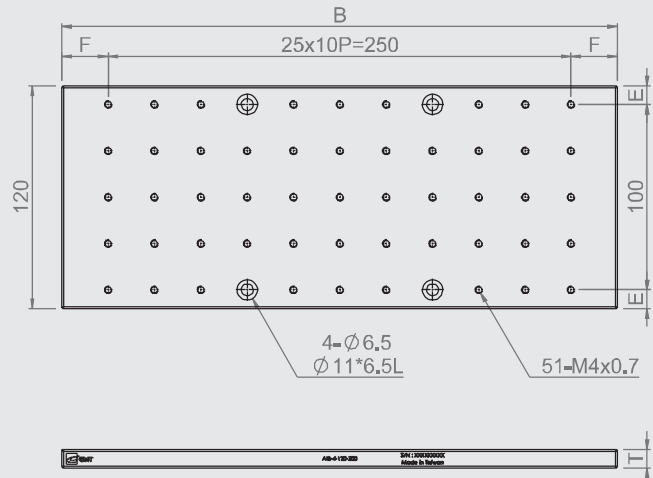
AIB-□-120-120



AIB-□-120-200



AIB-□-120-300



Specification

Unit: mm

Model no.		A	B	Numbers of hole	T	E	F	Material	Surface finish
M4	M6								
AIB-4-120-120	AIB-6-120-120	120	120	21	10	10	25	Aluminum alloy	Black anodized
AIB-4-120-200	AIB-6-120-200		200	31					
AIB-4-120-300	AIB-6-120-300		300	51					
AIB-4-150-150	AIB-6-150-150	150	150	21	10	25	Aluminum alloy	Black anodized	
AIB-4-150-200	AIB-6-150-200		200	31					
AIB-4-150-300	AIB-6-150-300		300	51					
AIB-4-200-200	AIB-6-200-200	200	200	45	10	25	Aluminum alloy	Black anodized	
AIB-4-200-300	AIB-6-200-300		300	73					

★ 4 * M6 mounting holes have been initially set on the 100 mm area in the middle of the plate.

★ Suitable for the precision stages, or can be mounted on the anti-vibration platform.